

WESTEN

The smart choice for your home comfort.



STAR MASTER

SPARE PARTS CATALOGUE

- October 2007 -

HOW TO READ THE SPARE PARTS CATALOGUE

In the spare part catalogue, after the exploded diagrams, there are the components lists of the boilers; this is the meaning of the different columns:

Pos.	Identification number of the component in the exploded diagram of the boiler.
Description	Short description of the component.
Code	BAXI S.p.A. code of the component.
Tab. XX	XX is the exploded diagram number of the boiler taken into consideration.
From serial number	Date (year and week) identifying the beginning of production of a component (taken from the serial number of the boiler). e.g. B005: year 2000 (B identifies the decade 2000-2009; 0 identifies the year) – 5th week. If the box is empty, the component is in use from the beginning of production of the boiler.
To serial number	Date (year and week) identifying the end of production of a component (taken from the serial number of the boiler). e.g. B012: year 2000 (B identifies the decade 2000-2009; 0 identifies the year) – 12th week. If the box is empty, the component is still in use.
Interchangeable	It identifies the interchangeability between the new component and the old one. YES: components are interchangeable. NO: components are not interchangeable.

BOILERS CONNECTION BOARD - EXPLODED VIEW

TABELLA COLLEGAMENTO CODICE CALDAIA - ESPLOSO

TABLERO UNIÓN CALDERA - EXPLOSIONADO

TABLEAU CONNECTION CODEX CHAUDIERE - VUE ECLATEE

BOILER CODE	BOILER DESCRIPTION	EXPLODED REF.
CODICE CALDAIA	DESCRIZIONE CALDAIA	RIF. ESPLOSO
CODIGO CALDERA	DESCRIPCION CALDERA	REF. EXPLOSIONADO
CODE CHAUDIERE	DESCRIPTION CHAUDIERE	RÉF. EXPLOSÉE
HBH456243970	STAR MASTER 240Fi	Tab 277
HBH456243971	STAR MASTER 240Fi	Tab 335

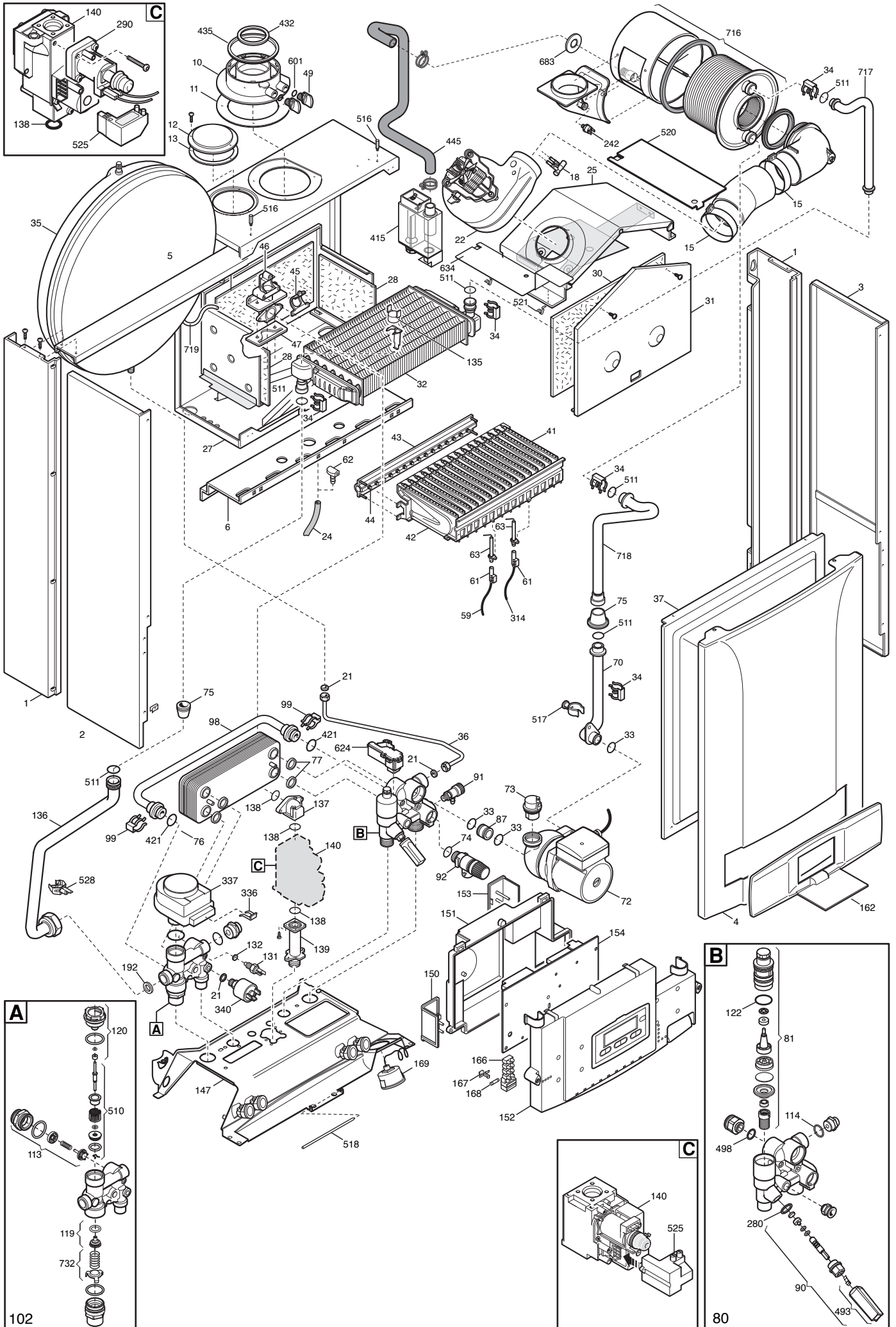
STAR MASTER

26/06/2008

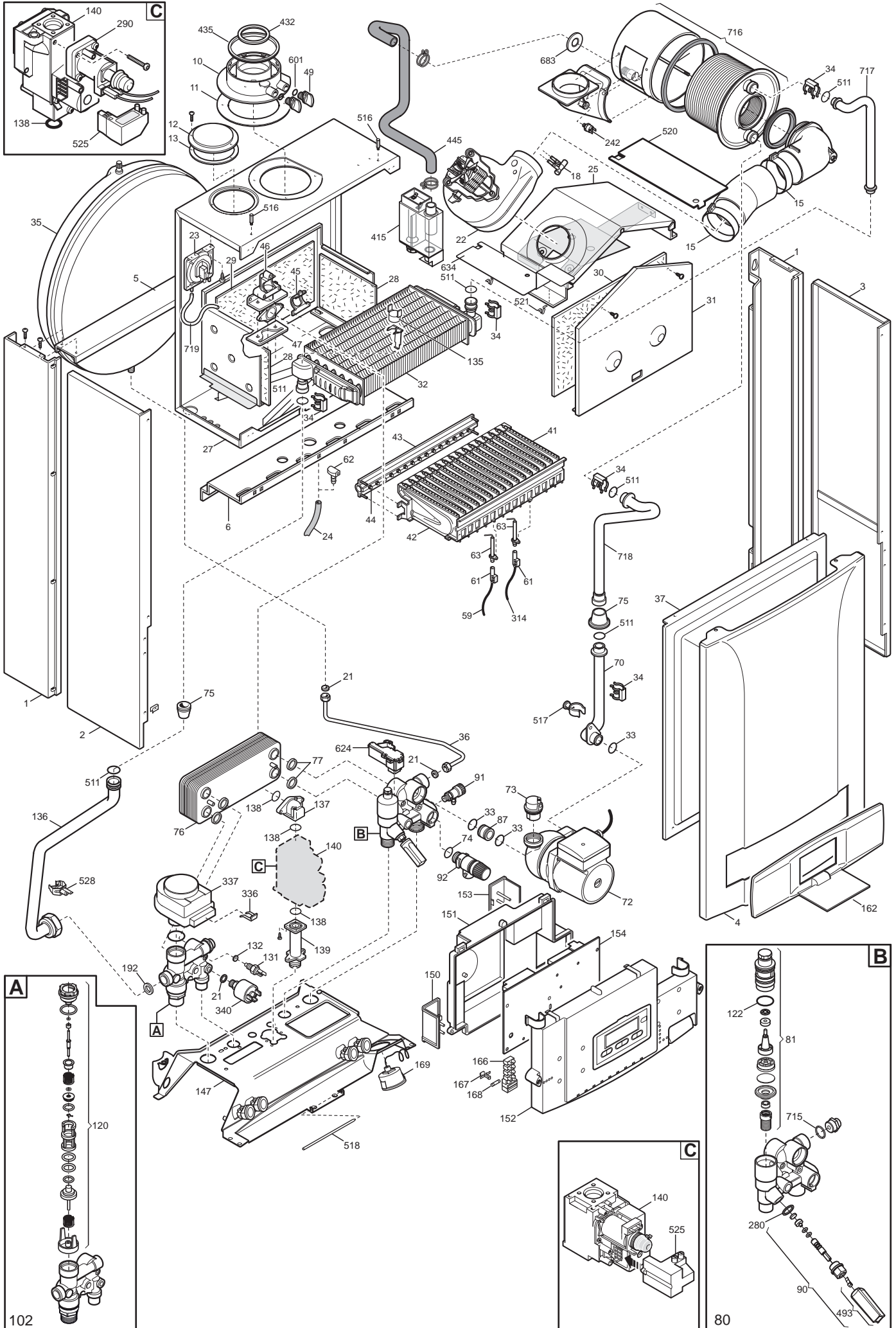
HBH456243971
STAR MASTER 240H
HBH456243970
STAR MASTER 240H

Pos	Code	Description code	To serial number	From serial number	Interchangeable:
49	5409280	TAP ADAPTOR	•	•	
59	8419050	LEAD - IGNITION ELECTRODE	•	•	
61	5407830	INSULATION BOOT - ELECTRODE	•	•	
62	5409570	SEALED CHAMBER HOSE ADAPTER	•	•	
63	8422570	ELECTRODE - IGNITION	•	•	
70	5688890	PIPE ASSEMBLY PUMP/EXCHANGER	•	•	
72	5655620	PUMP UP 15-60 AO (GRUNDFOS)	•	•	
73	607290	AUTOMATIC AIR VENT	•	•	
74	5406360	O-RING 14X1,78 EP	•	•	
75	5404670	GROMMET - PIPE ASSEMBLY	•	•	
76	5686670	DHW PLATE EXCHANGER 12 PLATES	•	•	
77	5404520	DHW PLATE EXCHANGER GASKET	•	•	
80	5680920	GROUP -15.0553-	•		
80	5696180	ES-RR ASS. C/FILLING 15.0737		•	
81	620340	FILTER-TRASDUC GROUP -100078-	•	•	
87	5210710	PUMP CONNECTING ELEMENT	•	•	
90	611930	FILLING GROUP	•	•	
91	5652030	DRAINING TAP	•	•	
92	9951170	SAFETY VALVE 3 BAR	•	•	
98	5213880	BY-PASS PIPE CUBE	•		
99	8380850	FIXING CLIP	•		
102	5680940	GROUP LUNA3 -15.0552-	•		
102	5696200	MR-US ASS.WITHOUT BYPASS150734		•	
113	617100	BY-PASS GR.	•		
114	5403820	O-RING 26,64 X 2,62	•		
119	605760	HYDRAULIC VENTURI ASSEMBLY	•		
120	600750	SPACER ASSEMBLY	•		
120	626710	DHW PADDLE GROUP -10.0355-		•	
122	5405370	O-RING	•	•	
131	8434820	TEMPERATURE SENSOR	•	•	
132	5402830	WASHER - SENSOR SEALING	•	•	
135	9951610	LIMIT THERMOSTAT 105°C	•	•	
136	5685320	EXCHANGER PIPE ASS. M.R. AVANT	•	•	
137	5210700	ELBOW - GAS FLOW OUTLET	•	•	
138	5402010	O RING 22.22x2.62	•	•	
139	5210630	CONNECTOR - GAS VALVE INLET	•	•	
140	5653610	GAS VALVE - SIGMA 845048	•	•	
140	5665220	GAS VALVE HON.	•	•	
147	5680910	SUPPORT FRAME LUNA3	•	•	
150	5412180	TERMINAL BLOCK COVER	•	•	
151	5407650	ELECTRICAL BOX COVER	•	•	
152	5692700	PRINT.CONTR.PANEL STAR MASTER	•	•	
153	5407660	PANEL - ACCESS	•	•	

Tab 277



Tab 335



WESTEN

BAXI S.p.A.
Via Trozzetti, 20
36061 BASSANO DEL GRAPPA (VI) ITALY
Tel. +390424517111 Telefax +390424517379
Web site: www.baxi.it e-mail: service@baxi.it